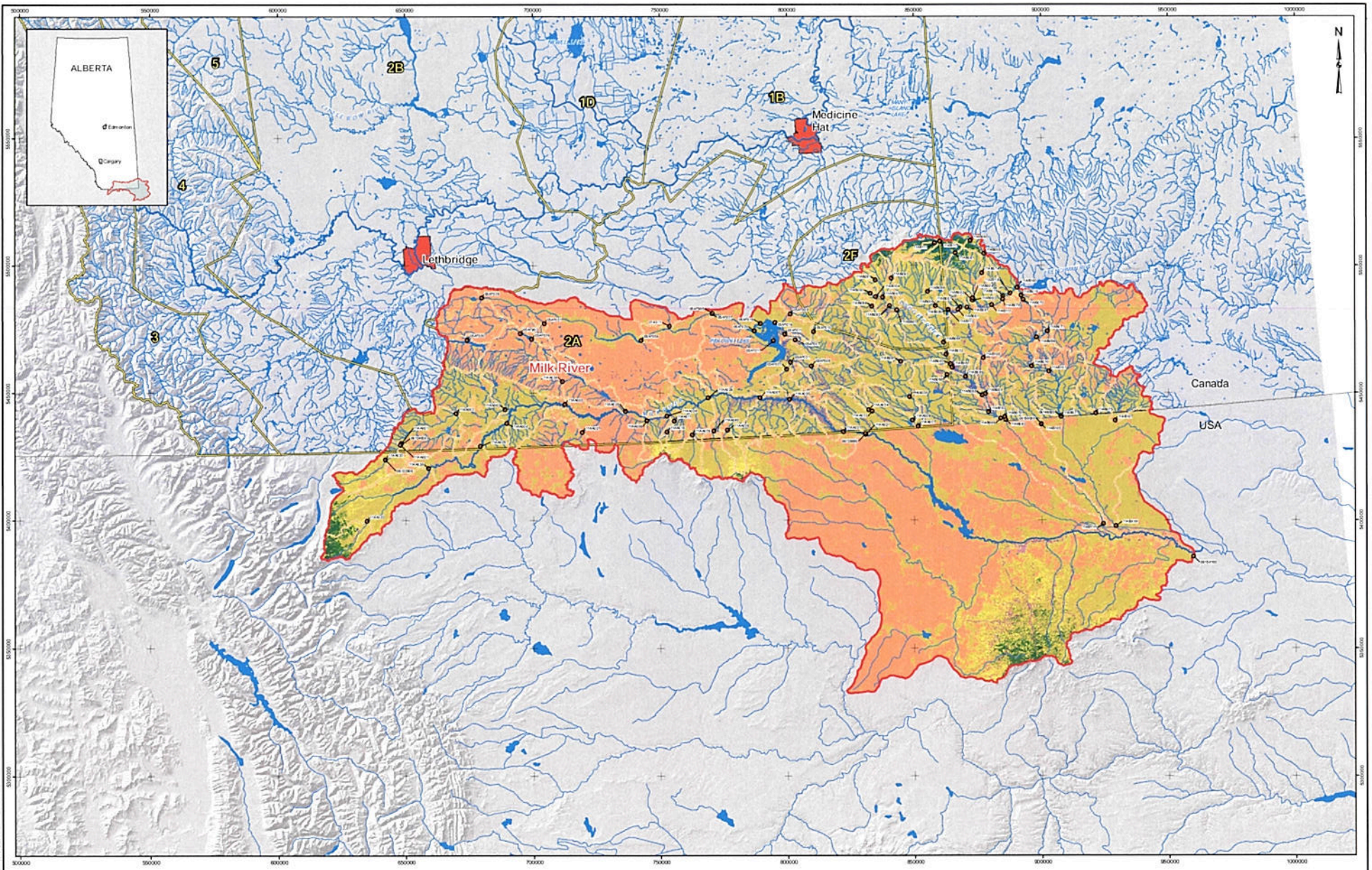




# APPENDIX A

## Milk River Basin



- LEGEND**
- HYDROMETRIC STATION
  - RIVER
  - HYDROLOGIC REGION
  - LAKE
  - MAJOR RIVER BASIN
  - PFRA SUB-BASIN
  - UNCLASSIFIED
  - WATER
  - EXPOSED LAND
  - DEVELOPED
  - SHRUBLAND
  - WETLAND
  - GRASSLAND NATIVE GRASS
  - ANNUAL CROPLAND
  - PERENNIAL CROPS AND PASTURE
  - CONIFEROUS FOREST
  - DECIDUOUS FOREST
  - MIXED FOREST

**REFERENCE**  
 Hydrography and city data for Canada obtained from Natural Resources Canada. Hydrography for the USA obtained from USGS. Hydrometric stations, hydrologic regions, basin and sub-basin data obtained from Alberta Environment. Landcover for Canada obtained from Agriculture and Agri-Food Canada. Landcover for the USA obtained from USGS. Projection: Alberta 10TM False Easting 500,000 at 115° W. Datum: NAD 83

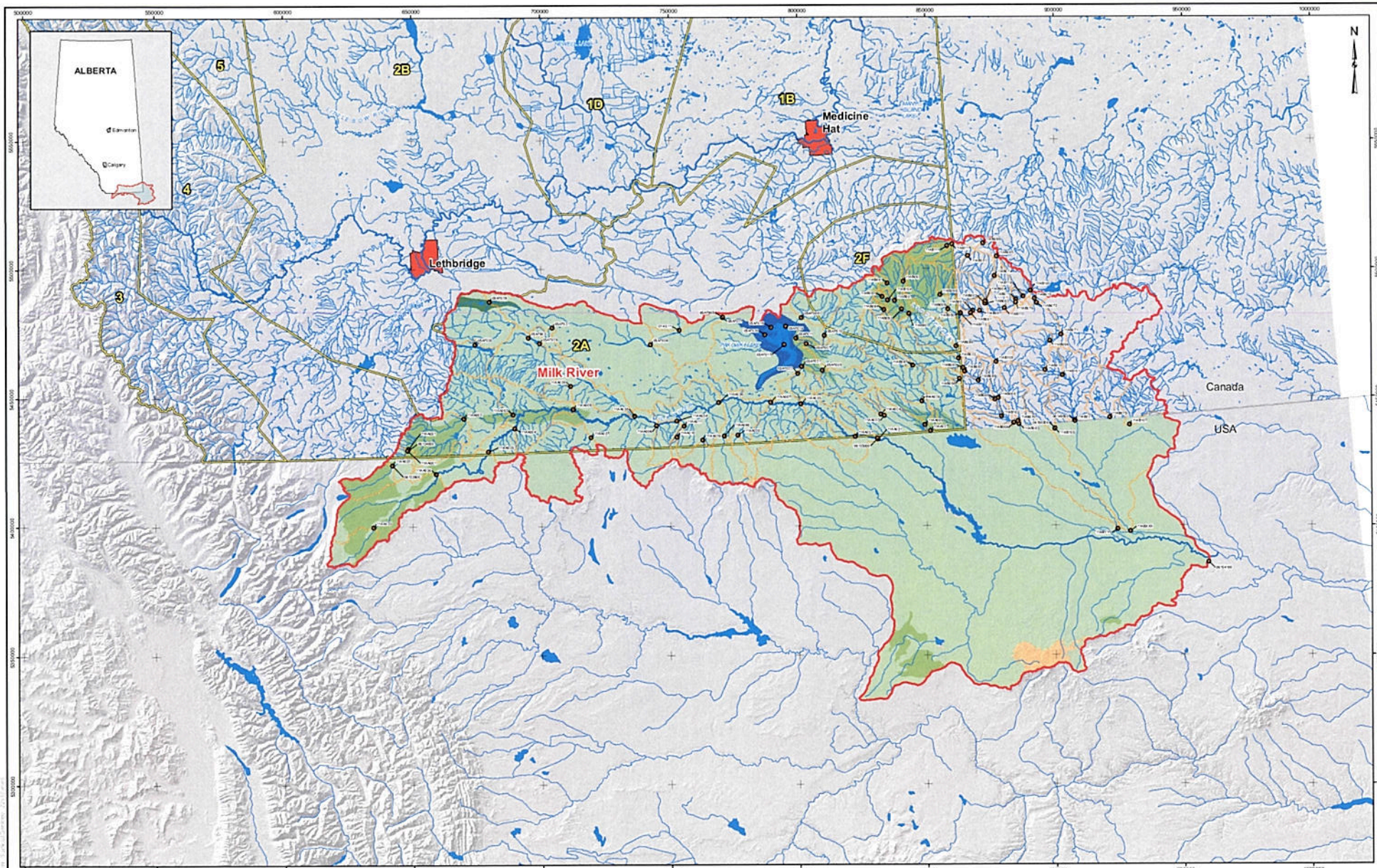


PROJECT  
 Government of Alberta | HYDRO-CLIMATE MODELLING OF THE SOUTH SASKATCHEWAN REGIONAL PLANNING AREA  
 Environment

TITLE  
 LAND COVER IN THE MILK RIVER BASIN

PREPARED BY: Goldcorp Associates  
 DATE: 11 Mar 2014  
 CHECKED BY: 22 Feb 2014  
 APPROVED BY: 19 Feb 2014

FIGURE: A.4



- LEGEND**
- |                       |                            |                          |
|-----------------------|----------------------------|--------------------------|
| ● HYDROMETRIC STATION | ■ IMPERVIOUS               | ■ RAPIDLY DRAINED SAND   |
| — RIVER               | ■ ORGANIC                  | ■ RAPIDLY DRAINED TILL   |
| — HYDROLOGIC REGION   | ■ WATER                    | ■ WELL DRAINED CLAY LOAM |
| ■ LAKE                | ■ POORLY DRAINED CLAY LOAM | ■ WELL DRAINED SAND      |
| ■ MAJOR RIVER BASIN   | ■ POORLY DRAINED SAND      | ■ WELL DRAINED TILL      |
| ■ PFRA SUB-BASIN      | ■ POORLY DRAINED TILL      | ■ WELL DRAINED RESIDUAL  |
|                       |                            | ■ NO DATA                |

**REFERENCE**  
 Hydrography and city data for Canada obtained from Natural Resources Canada. Hydrography for the USA obtained from USGS. Hydrometric stations, hydrologic regions, basin and sub-basin data obtained from Alberta Environment. Surface Geology for Alberta obtained from Agriculture and Agri-Food Canada. Surface Geology for Montana obtained from Natural Resources Conservation Service. Projection: Alberta 10TM False Easting 500,000 at 115° W. Datum: NAD 83

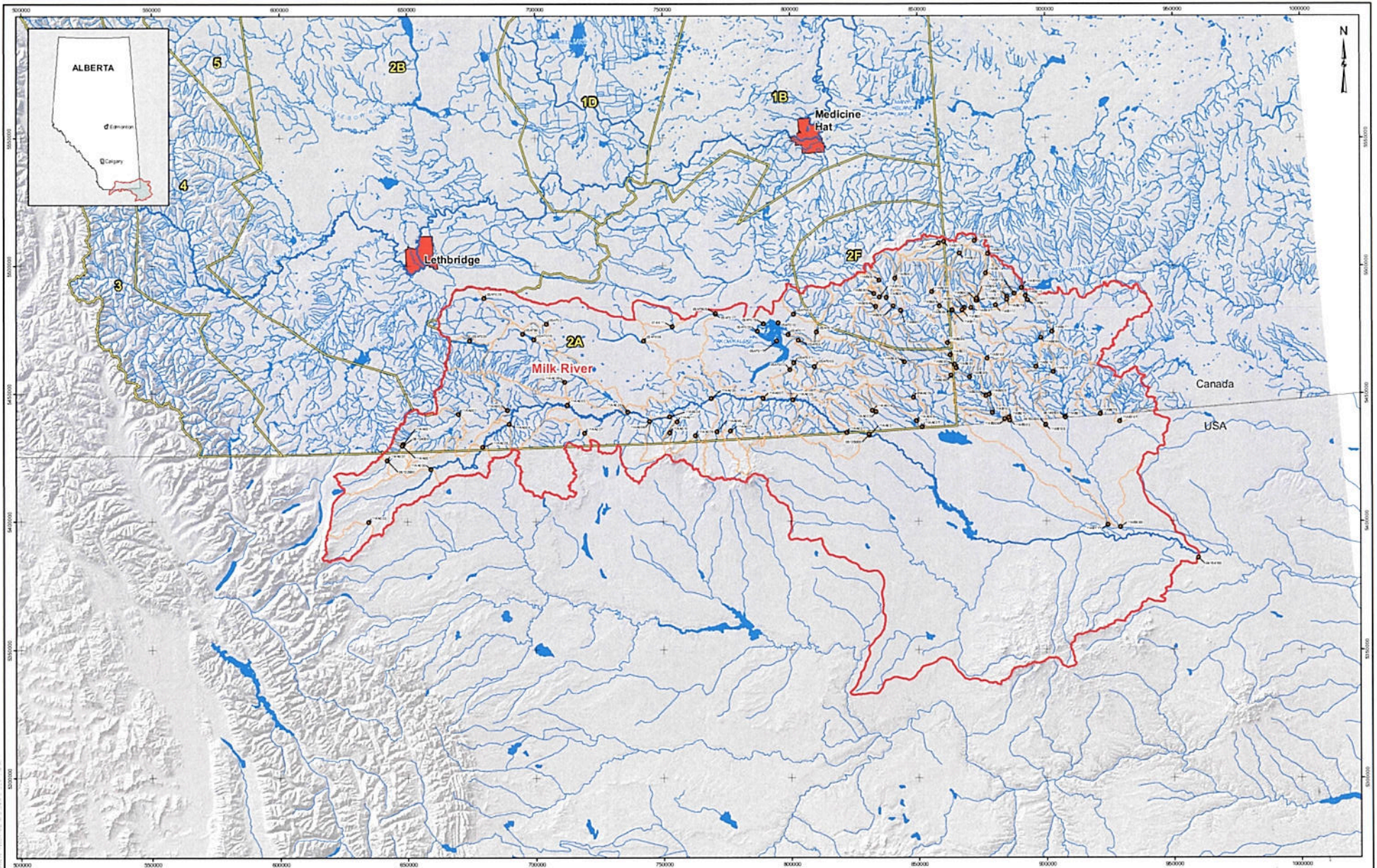


PROJECT  
 Government of Alberta HYDRO-CLIMATE MODELLING OF THE SOUTH SASKATCHEWAN REGIONAL PLANNING AREA

TITLE  
 SURFICIAL GEOLOGY IN THE MLK RIVER BASIN

DESIGN	20 Sep 2018	SCALE	AS SHOWN	REV.
CHKD	20 Sep 2018			
REVISED	20 Sep 2018			

**FIGURE: A.3**

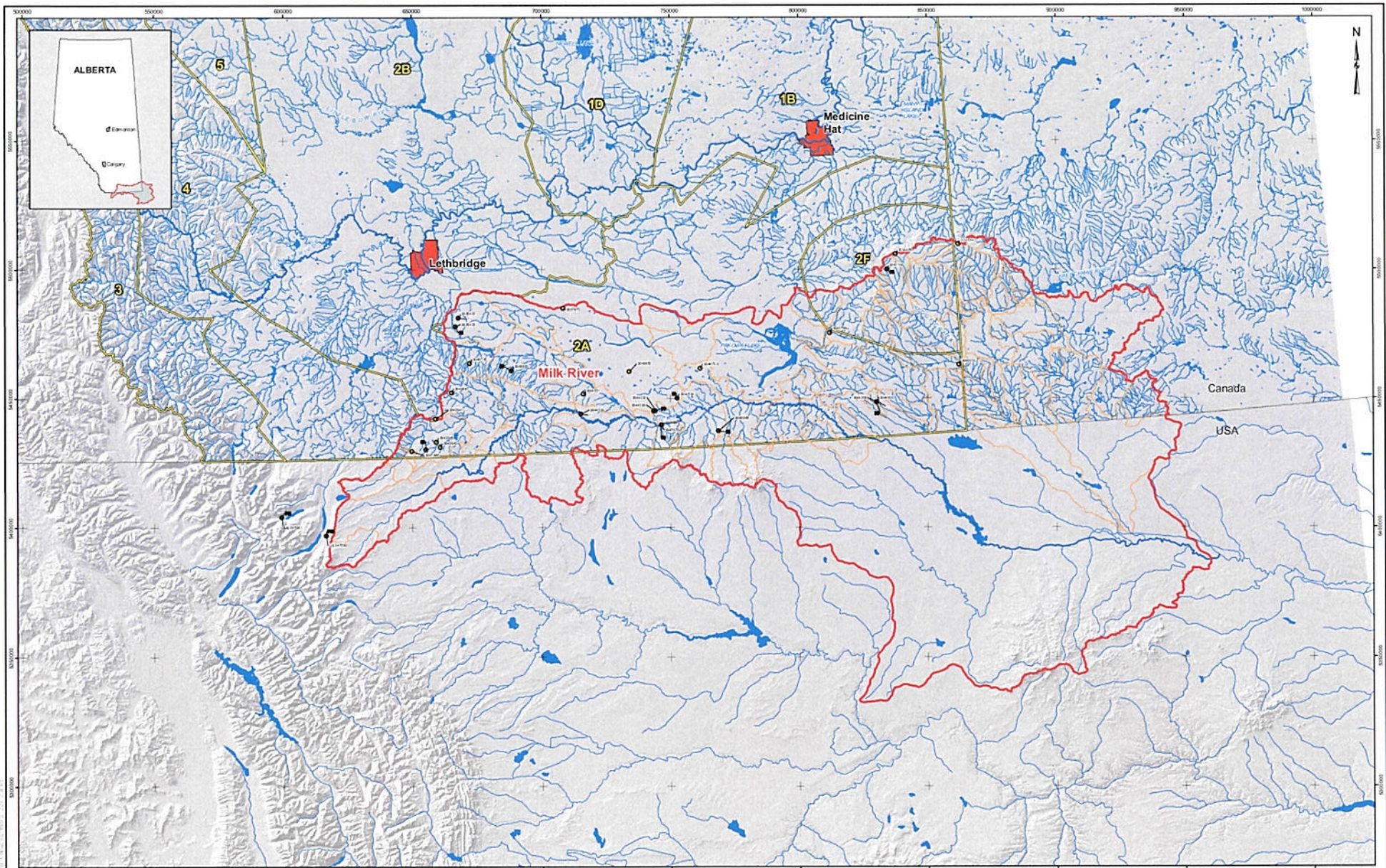


- LEGEND**
- HYDROMETRIC STATION
  - RIVER
  - HYDROLOGIC REGION
  - LAKE
  - MAJOR RIVER BASIN
  - PFRA SUB-BASIN

**REFERENCE**  
 Hydrography and city data for Canada obtained from Natural Resources Canada. Hydrography for the USA obtained from USGS.  
 Hydrologic regions, hydrologic regions, basin and sub-basin: data obtained from Alberta Environment.  
 Projection: Alberta 10TM False Easting 500,000 at 115° W. Datum: NAD 83



 Government of Alberta Environment	HYDRO-CLIMATE MODELLING OF THE SOUTH SASKATCHEWAN REGIONAL PLANNING AREA		
	<b>HYDROMETRIC STATIONS IN THE MILK RIVER BASIN</b>		
 Golder Associates Calgary, Alberta	PROJECT NO: 05-1238-008	SCALE AS SHOWN	REV: 1
	DESIGN: 15 May 2016	DRAUGHTING: 20 May 2016	CHECKED: 20 May 2016



- LEGEND**
- CLIMATE STATION
  - INDEX STATION PRECIPITATION
  - INDEX STATION TEMPERATURE
  - RIVER
  - HYDROLOGIC REGION
  - LAKE
  - MAJOR RIVER BASIN
  - PFRA SUB-BASIN

**REFERENCE**  
 Hydrography and city data for Canada obtained from Natural Resources Canada. Hydrography for the USA obtained from USGS.  
 Hydrologic regions, hydrologic regions, basin and sub-basin data obtained from Alberta Environment.  
 Projection: Alberta 10TM False Easting 500,000 at 115° W. Datum: NAD 83.

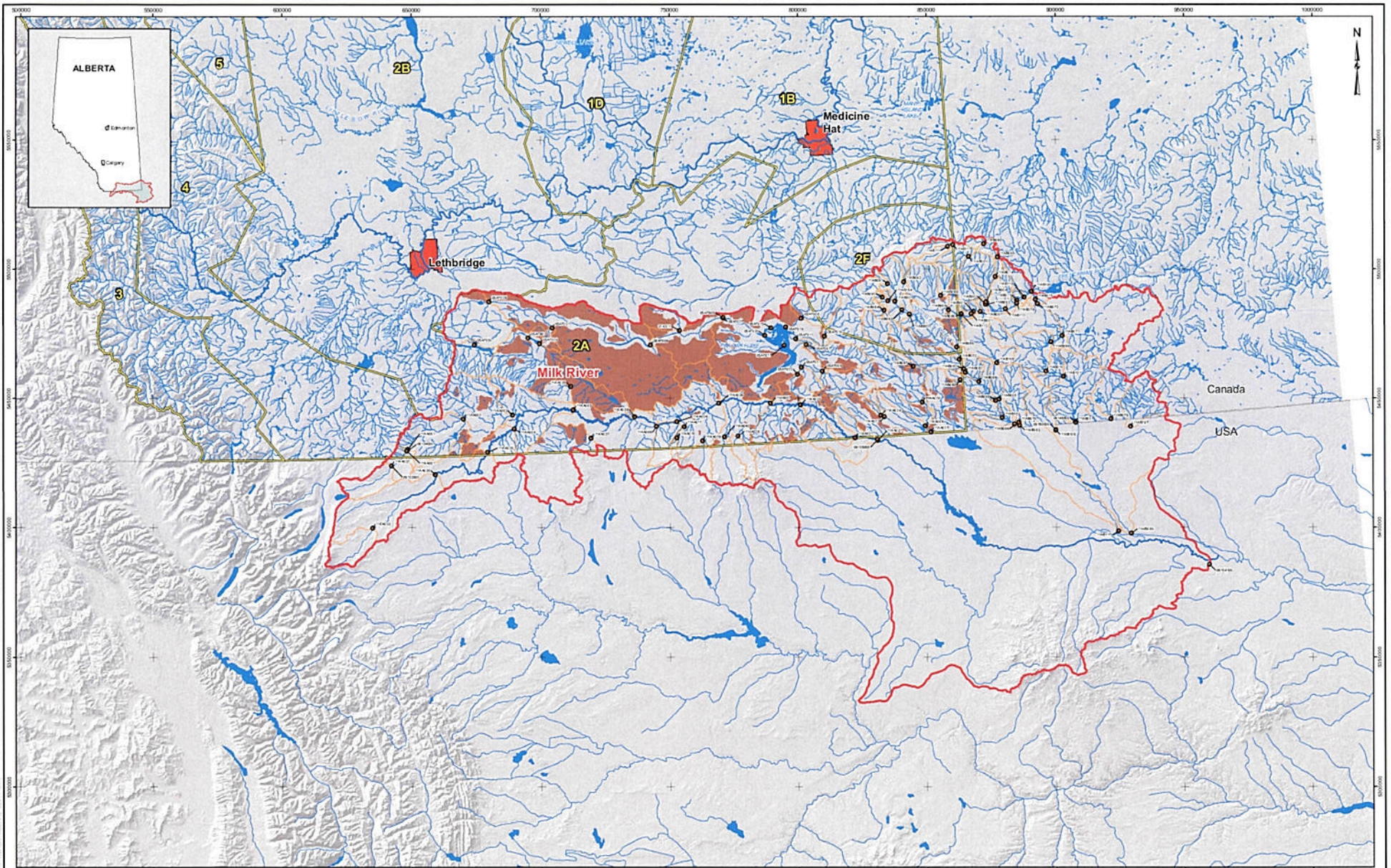


PROJECT  
**Government of Alberta** HYDRO-CLIMATE MODELLING OF THE SOUTH SASKATCHEWAN REGIONAL PLANNING AREA  
 Environment

TITLE  
**CLIMATE STATIONS IN THE MILK RIVER BASIN**

PROJECT NO.	86-115-100	SCALE	AS SHOWN	REV.	1
CHECKED BY	12 Sep 2018				
DESIGNED BY	20 Mar 2018				
CHECKED BY	20 Jul 2018				
APPROVED BY	20 Jul 2018				

**FIGURE: A.1**



- LEGEND**
- HYDROMETRIC STATION
  - RIVER
  - HYDROLOGIC REGION
  - LAKE
  - MAJOR RIVER BASIN
  - NON-CONTRIBUTING AREA
  - PFRA SUB-BASIN

**REFERENCE**  
 Hydrography and city data for Canada obtained from Natural Resources Canada. Hydrography for the USA obtained from USGS.  
 Hydrometric stations, hydrologic regions, basin and sub-basin data obtained from Alberta Environment.  
 Projection: Alberta 10TM False Easting 500,000 at 115° W. Datum: NAD 83



	PROJECT <b>HYDRO-CLIMATE MODELLING OF THE SOUTH SASKATCHEWAN REGIONAL PLANNING AREA</b>																				
	TITLE <b>NON-CONTRIBUTING AREAS IN THE MILK RIVER BASIN</b>																				
	<table border="1"> <tr> <td>PROJECT NO.</td> <td>108-004</td> <td>SCALE AS SHOWN</td> <td>REV. 1</td> </tr> <tr> <td>DRAWN BY</td> <td>M. W. 2018</td> <td></td> <td></td> </tr> <tr> <td>CHECKED BY</td> <td>J. M. 2018</td> <td></td> <td></td> </tr> <tr> <td>DATE</td> <td>20 JUN 2018</td> <td></td> <td></td> </tr> <tr> <td>REVISION</td> <td>18 JUN 2018</td> <td></td> <td></td> </tr> </table>	PROJECT NO.	108-004	SCALE AS SHOWN	REV. 1	DRAWN BY	M. W. 2018			CHECKED BY	J. M. 2018			DATE	20 JUN 2018			REVISION	18 JUN 2018		
PROJECT NO.	108-004	SCALE AS SHOWN	REV. 1																		
DRAWN BY	M. W. 2018																				
CHECKED BY	J. M. 2018																				
DATE	20 JUN 2018																				
REVISION	18 JUN 2018																				

**FIGURE A.5**